



VOLAIRE

ON BROOKSIDE



VOLAIRE

A true attribute of urban living, this superbly presented masterpiece is set within the tranquility of the suburbs yet a stones throw from Sarit Centre. Located on Matundu Lane, accessed from Brookside Grove, the development boasts 91 bespoke apartments with a wholesome recreational annex on 0.8 acres only minutes from Westlands social amenities.

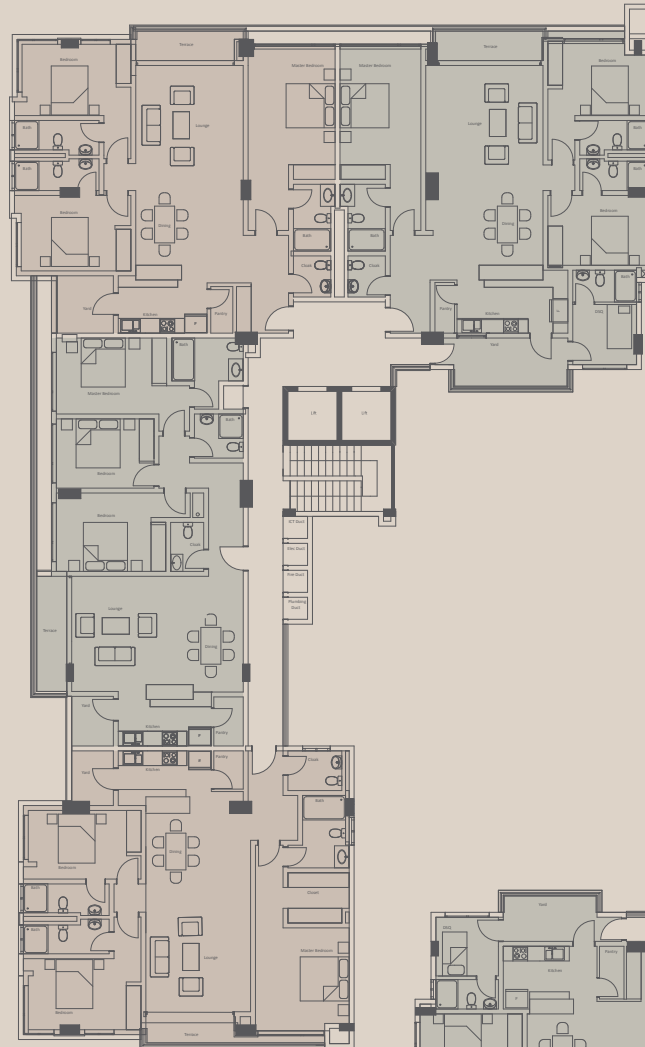


MATUNDU LANE

GATE

MATUNDU LANE

A02
3 Bed Apartment
1657 sq.ft
All Ensuite



A03
3 Bed Apartment
1453 sq.ft
Master Ensuite

A04
3 Bed Apartment
1689 sq.ft
All Ensuite

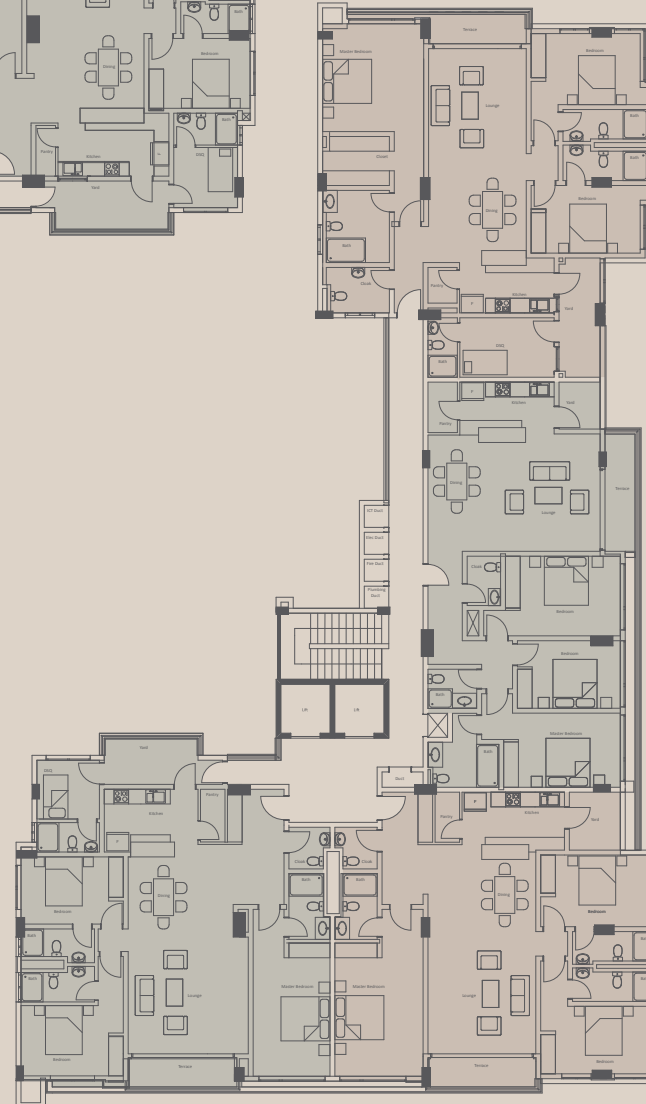
B01
3 Bed Apartment
1775 sq.ft
All Ensuite with DSQ

A01
3 Bed Apartment
1808 sq.ft
All Ensuite with DSQ

B04
3 Bed Apartment
1915 sq.ft
All Ensuite

B03
3 Bed Apartment
1474 sq.ft
Master Ensuite

B02
3 Bed Apartment
1646 sq.ft
All Ensuite





APARTMENT LAYOUTS

The design of the Volaire residences provides wonderful fluidity throughout the apartment. A well-appointed eat-in kitchen opens up into the dining room and living room, which are handsomely connected. Apartments each have a balcony for a breath of clear country air while the bedrooms are impeccably designed to bring in the green vistas.





APARTMENT DESIGN

Custom designed by specialist interior designers, Volaire's apartments will reflect the environments natural landscape proposing a soft, welcoming atmosphere that is informal yet refined.

VOLAIRE LIFE

- Residence Lounge
- Heated Swimming Pool
- Fully Fitted Gym
- Childrens Play Area
- Landscaped Gardens
- Borehole Water Supply
- Solar Hot Water System
- Satellite TV/Fibre Optic Connetivity
- Power Backup for Entire Development
- High Speed Lifts
- Disabled Access
- Manned Security at Entrance
- Access Control & Intercom
- Electric Fence & CCTV Surveillance
- Ample Secure Parking



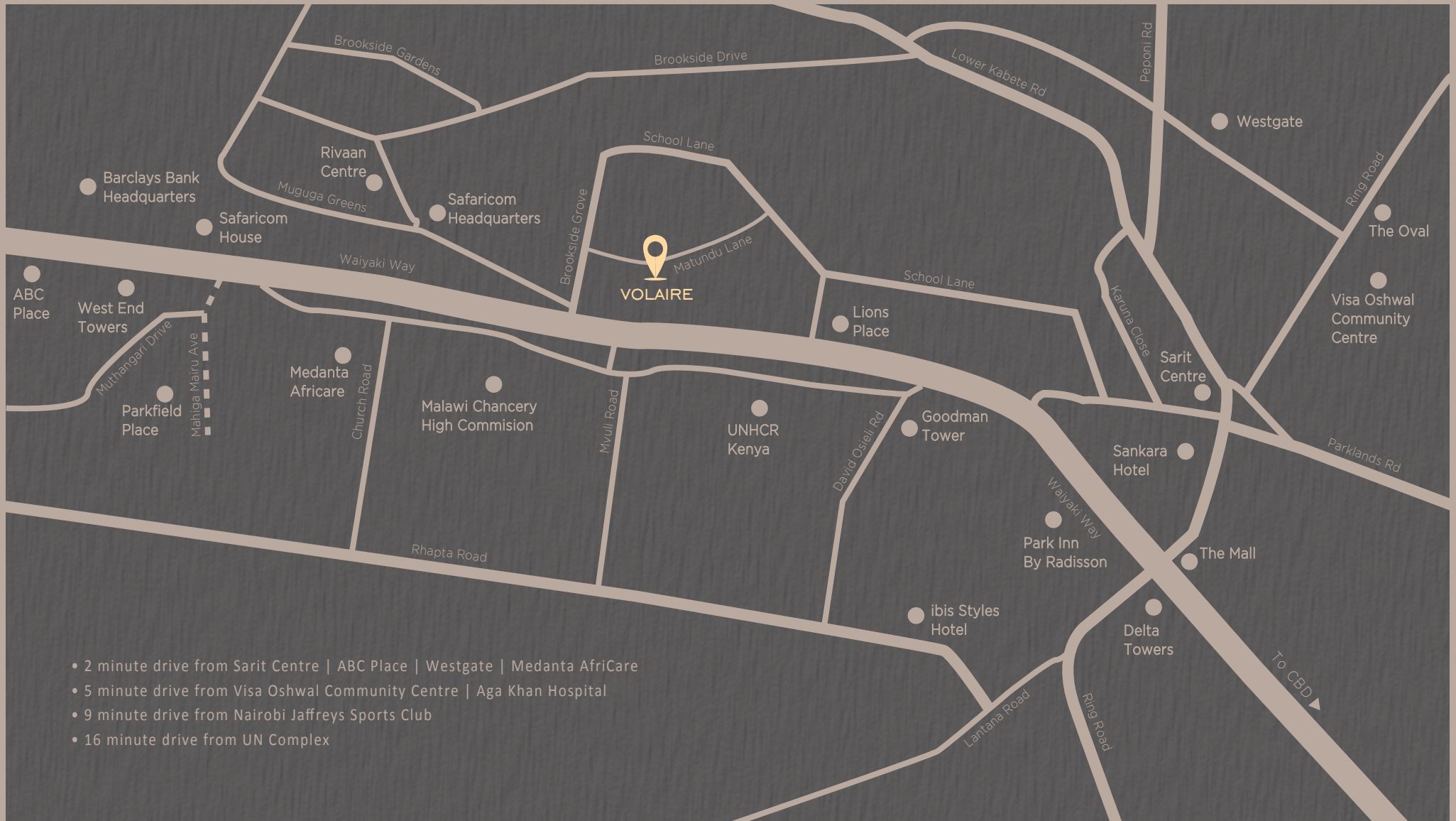


WHY VOLAIRE

Volaire favors the investor with a combination of location preeminence and Grade A finishes fulfilling an unserved niche in the area. As Westlands moves toward regeneration in the urban cycle, Volaire will benefit from the areas gain in capital value as well as the rise in number of potential tenants looking to rent in this increasingly commercialized city hub.

LOCATION

Located a stones throw away from Sarit Centre in one of the most coveted suburbs, Volaire will sit on Matundu Lane, an exclusive serene street accessed from Brookside Grove well positioned in the heart of Westlands enjoying easy access to city's best shopping centres, hospitals and educational institutions.



Developers
Canaan Developers Ltd

Architect
Bowman Associates / ArcPrime Consult Ltd

Structural/Civil Engineers
Kimpah Associates Ltd

Lawyers
CM Advocates LLP

Sole and Exclusive Selling Agents



HassConsult Limited, ABC Place Waiyaki Way
P.O. Box 14090 - 00800 Nairobi Kenya,
T: 0709 479 000
E: info@hassconsult.co.ke | W: www.hassconsult.co.ke

Sales: 0709 479 479

Property Reference No: 2211

TEAM

HassConsult for themselves and for the vendors of this property whose agents they are, give notice that these particulars do not constitute any part of an offer or a contract nor are these guaranteed to be accurate under any circumstances.

An aerial photograph of a forest with a mix of green and brown foliage. A large black rectangle is centered on the image, containing the website address in white text. The forest appears to be a mix of deciduous and coniferous trees, with some areas showing more vibrant green and others more brownish or greyish, possibly due to shadows or different tree species.

WWW.VOLAIRE.CO.KE