



terreno

RIVERSIDE



The Balance of City and Nature

Terreno is a visionary address nestled off Riverside Drive on 0.5 acres. Rising 20 floors, it presents a collection of 1 and 2 bedroom residences inspired by a boutique hotel aesthetic.

Positioned between the lush canopy of the Arboretum and the vibrant energy of Westlands, Terreno blends nature and city living with Sky Gardens, rooftop amenities, and integrated retail spaces designed for a seamless urban lifestyle.

A Vibrant Retail Offering

At ground level, Terreno is designed to settle the everyday. Landscaped gardens at the outdoor courtyard offer residents a natural pause, a coffee shop to start the morning, a convenience store to anticipate the small needs of daily life, and a considered reception to set the tone from the moment they arrive.





Thoughtfully Designed Interiors

Open, light-filled, and thoughtfully composed, the living spaces balance openness with comfort. Expansive windows draw in natural light, enhancing volume and framing far-reaching views that extend the experience beyond the interior.

A seamless flow between the lounge and dining areas supports both relaxation and connection, while a refined palette of textures and tones creates a setting that feels modern, calm, and effortlessly elevated.





Curated Around Light and Flow

Calm, expressive, and effortlessly refined, each space is designed to feel both elevated and intuitive.

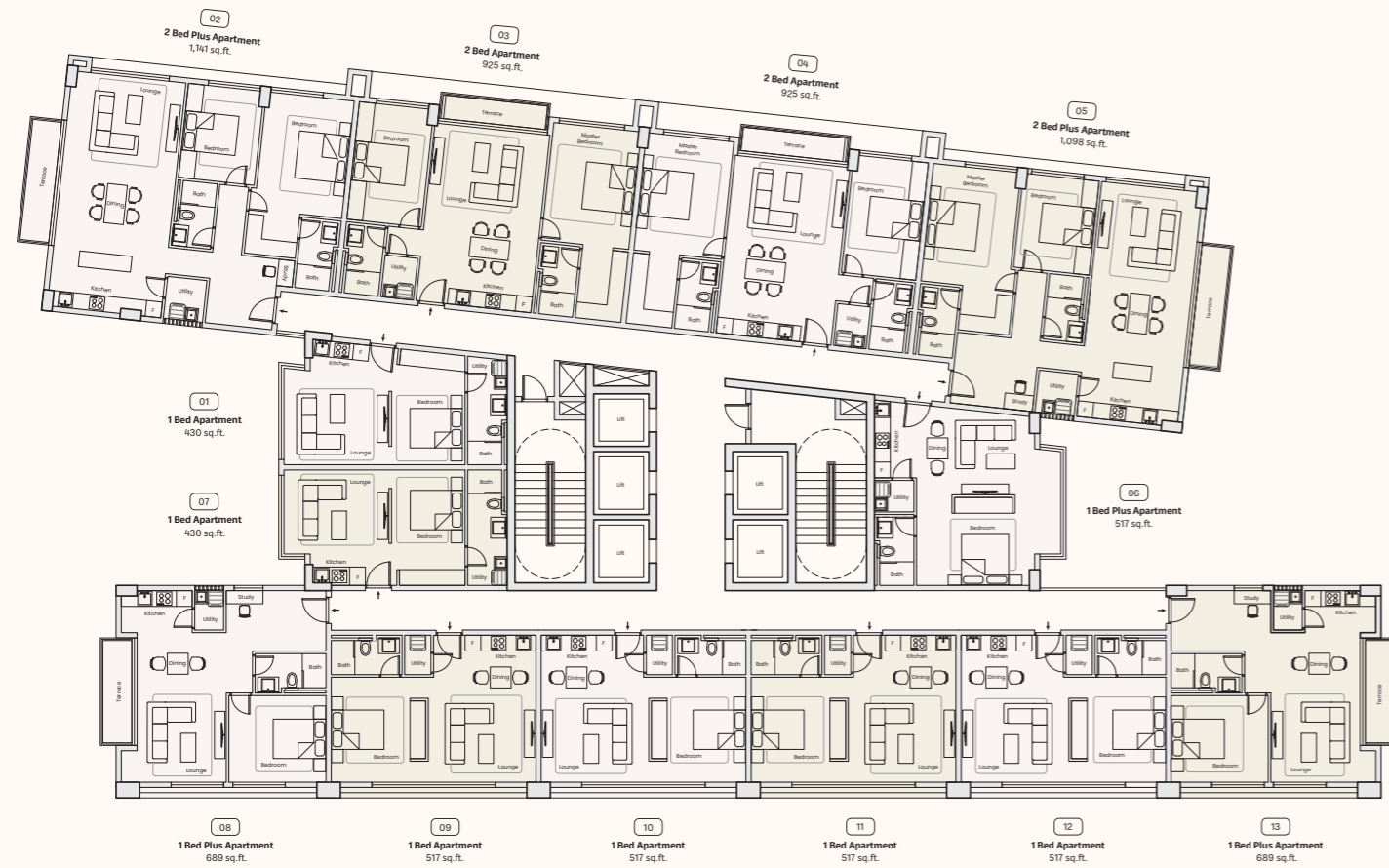
The kitchen integrates seamlessly into the dining area, creating a fluid setting for everything from quiet mornings to shared moments. Clean lines and modern finishes enhance both function and form, while neutral palettes provide flexibility for personalization.

A Quietly Refined Retreat

Soft, calming tones create a sense of retreat, balancing comfort with privacy to support both short- and long-term living. Floor-to-ceiling windows draw in natural light, enhancing the feeling of space while maintaining a warm, restful atmosphere.

The result is a bedroom that feels inviting and composed, designed to elevate everyday living.





Typical Floor Plan

Layouts for Effortless Living

Each floor plan encourages natural flow throughout the home, maximizing usable space and flexibility. The careful separation of living and private areas supports comfort and efficiency, while smart layouts make every home feel both practical and inviting for everyday life.

Verdant Sky Gardens

Sky Gardens offer a rare moment of calm above the city, featuring elevated green spaces where residents can unwind, enjoy fresh air, and find a quiet retreat from the urban pace below.





THE DADUK



A Complete Rooftop Offering

Designed around two distinct views, the Sky Park captures the full breadth of the address. One side opens to the calming canopy of the Arboretum, the other to the energetic Westlands skyline in panoramic view.

Arboretum-View Experiences

- Heated Infinity Pool
- Water Cascades with Fire Pit Lounge
- Landscaped Gardens with Cozy Seating Alcoves
- Residents' Lounge
- Fully-Fitted Gym

City-View Experiences

- Panoramic Rooftop Restaurant
- Indoor - Outdoor Seating

Radiant Sky Park Pool

The rooftop pool brings vibrancy and social connection into everyday living, providing a serene space where residents can relax, soak up the sun, swim, and gather with friends while enjoying expansive city views.





Ambient Outdoor Seating

Outdoor seating with a firepit offers warm, relaxed moments under open skies, creating inviting spaces where residents can gather, share stories, or unwind after a busy day. These areas encourage meaningful connections and nurture a strong sense of community.

The Sky Park Residents' Lounge

The dedicated residents' lounge provides a calm and connected extension of home, offering versatile spaces for work, relaxation, or socializing. Thoughtfully designed for evolving resident needs, it becomes a welcoming retreat within the building, perfect for quiet focus or casual gatherings.





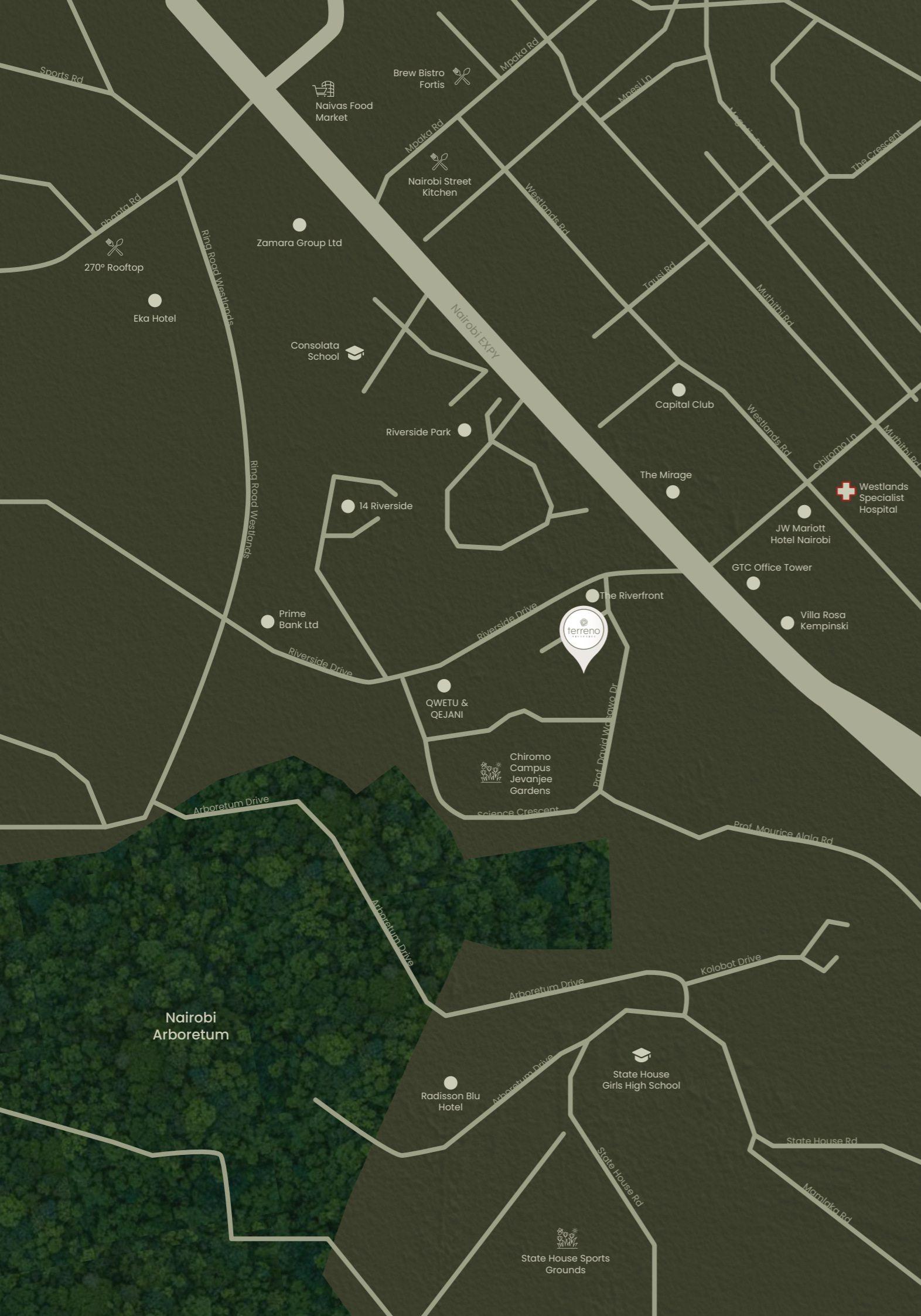
Fully-Fitted Fitness Gym

Designed as an extension of modern living, the fully fitted gym offers a calm, refined setting for movement and wellbeing. Contemporary finishes and an intentional layout create a space that supports both daily routines and moments of reset.

Refined Sky Park Restaurant

The Sky Park restaurant and bar offer a carefully curated social experience, where residents can enjoy meals, drinks, and moments of leisure while taking in sweeping city views. This amenity elevates daily living, blending convenience with vibrant urban lifestyle moments.





Prime Positioning

Terreno's strategic location offers seamless connectivity to the airport, Westlands, and the CBD, while being close to dining, shopping, and essential services. This prime positioning not only enhances lifestyle convenience for residents but also strengthens the property's long-term investment prospects, ensuring lasting demand and value retention.



Canaan Developers Limited is a subsidiary company of Canaan Group of Companies, a multinational group operating across Africa in construction, property and infrastructure development. Canaan Developers seek to reflect advancement in design, technology and execution and currently have the following portfolio of projects in East Africa.

Previous Projects

- Grand Riverside - Riverside Drive
- The Pavillion - Addis Ababa, Ethiopia
- Lumiere - School Lane, Westlands
- Royal Tulip - Hurlingham
- Voltaire - Westlands
- Escada - Westlands
- 719 Springs - Lavington
- Moments - Lavington
- Altura - Upperhill
- Aura - Riverside

This brochure is not intended to form part of any contract or warranty. All statements, information, plans, visuals, renders, specifications and depictions herein are conceptual and subject to change, revision and regulatory approval. The Developer and its agents shall not be held liable for any reliance placed upon this brochure or for any discrepancies between the illustrations and the completed development. Final specifications and details shall be governed solely by the executed Sale Agreement and approved construction documentation.

